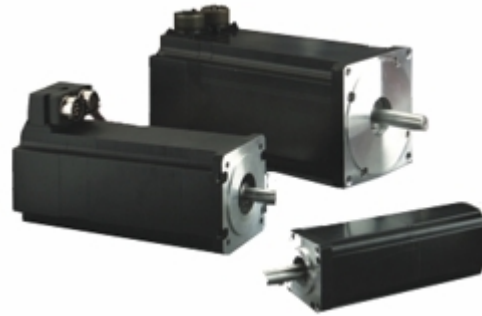


## AB Series Brushless motor with resolver and Copley XTL Xenus Amplifier



### Features

- Several standard windings (and custom windings).
- Peak torque from 1.28 to 38.3 Nm (11.3 – 339 lb-in).
- Continuous stall torque from 0.42 to 12.88 Nm (3.75 – 114 lb-in).
- Three different NEMA style frame sizes: 23, 34, 56, each in multiple lengths.
- Resolver options.

XTL Xenus Resolver Wiring

